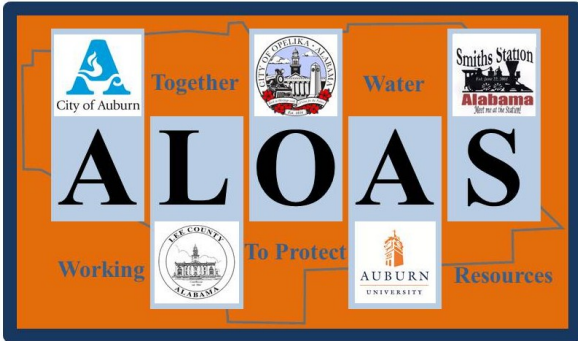


The Halawakee Creek Watershed



Photo: Beans Mill

A Joint Publication of:



The City of Auburn

Lee County

The City of Opelika

Auburn University

The City of Smiths Station

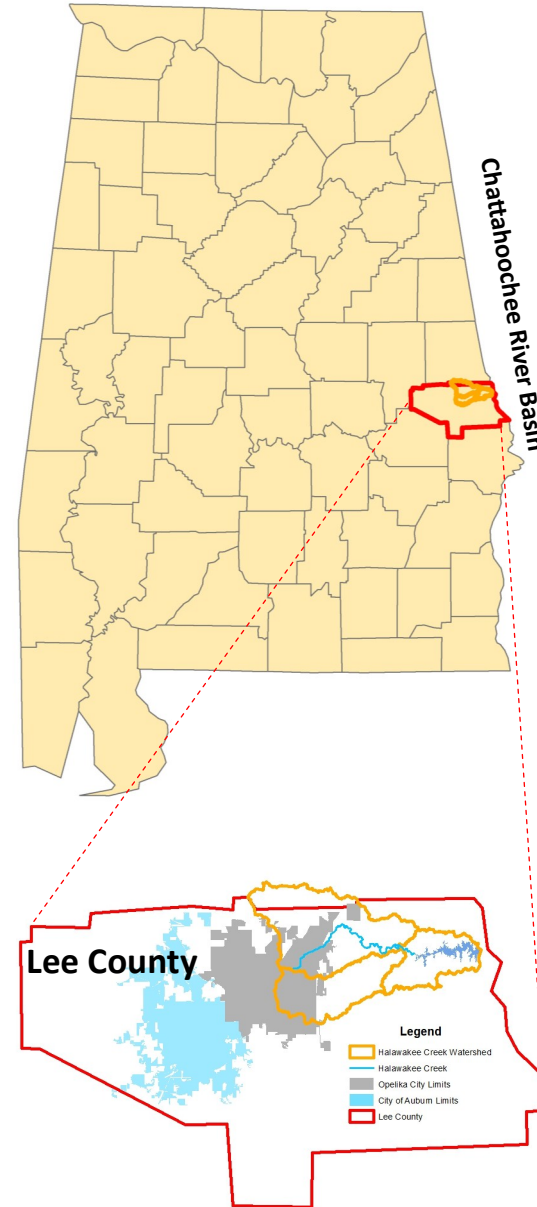
ALOAS is a voluntary partnership formed between the City of Auburn, Lee County, the City of Opelika, Auburn University, and the City of Smiths Station to facilitate the sharing of information between its respective watershed and stormwater management programs and the citizens they serve.

This brochure is one of a series of publications regarding storm water issues in Lee County.

The series is produced by the ALOAS Storm Water Advisory Panel and is intended to protect, maintain, and restore the chemical, physical, and biological integrity of local waters in order to enhance the quality of life for our citizens.

***“Local Citizen
Groups and
Governments
Working Together
for Clean Water”***

Watershed Location



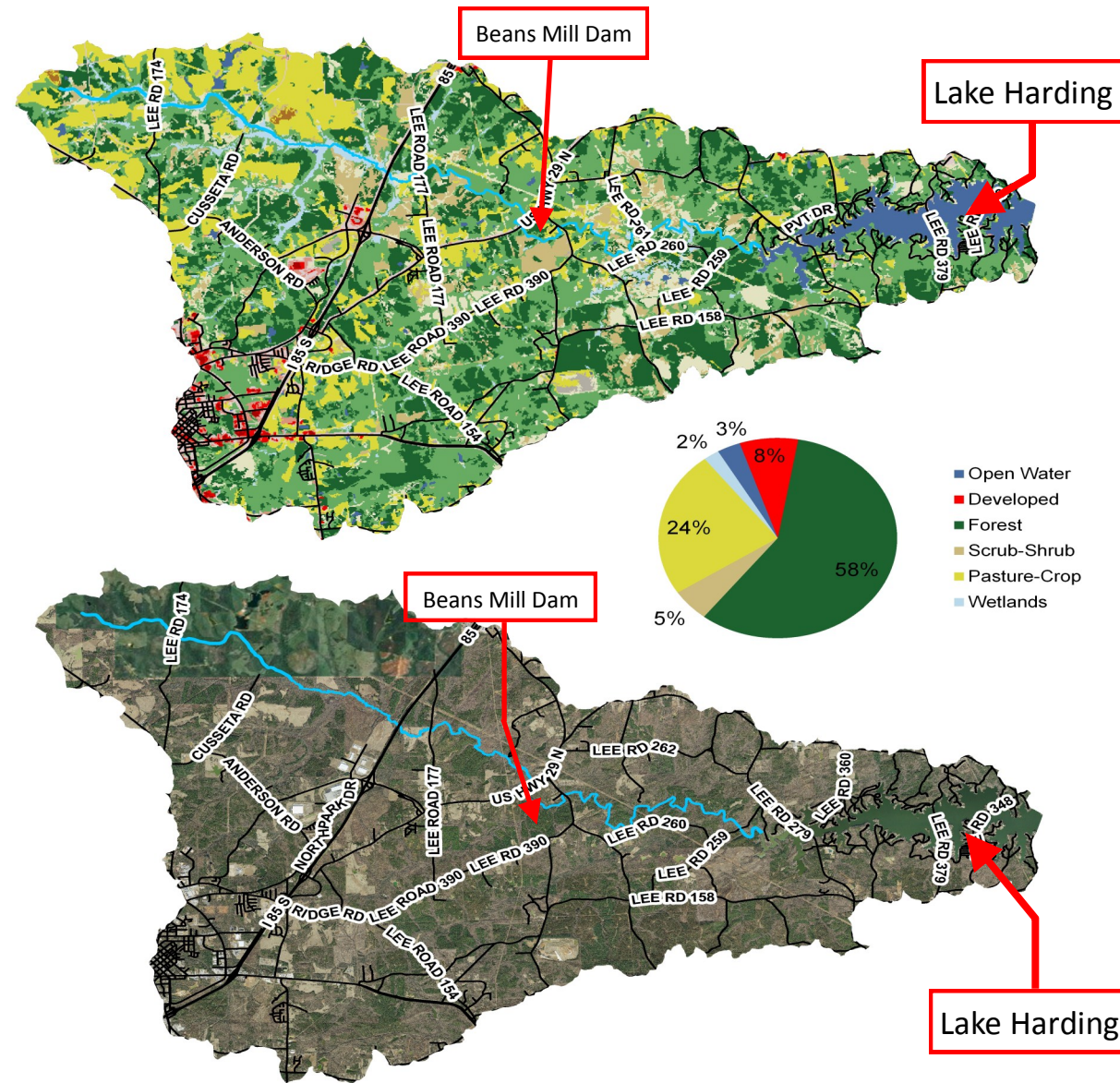
Watershed At a Glance

Halawakee Creek is an impaired stream that is a tributary to Lake Harding, which is an impoundment of the Chattahoochee River. Halawakee Creek begins in the southeast quarter of Chambers County and flows southeast along the northeast part of Lee County before flowing into the Halawakee Embayment, which enters Lake Harding. The Halawakee Creek Watershed drains an area of almost 96 square miles. The entire length of Halawakee Creek (16.6 miles) was listed on the Alabama Department of Environmental Management (ADEM) 2012 303(d) list for impairment. It is classified impaired because it is not meeting state water quality criteria for siltation to support its designated use as fish and wildlife habitat. Possible sources of this siltation are believed to be from land development throughout the Halawakee Creek Watershed. As required by law, the ADEM will issue a Total Maximum Daily Load (TMDL), establishing a limit, or load allocation, on the amount of silt/sediment that can be discharged to the creek and still meet state water quality standards. ADEM plans to release a draft TMDL for Halawakee Creek by 2020.

What's Being Done to Help?

The Alabama Department of Environmental Management is helping through the establishment of the Total Maximum Daily Load (TMDL). The TMDL will provide guidelines for sediment limits to ensure water quality standards are met. One way to accomplish water quality standards is to implement erosion and sediment control best management practices (BMPs). Implementation of these BMPs and development and enforcement of local erosion and sediment control programs could potentially improve the overall health of Halawakee Creek. Alabama Water Watch is also a group helping to improve Halawakee Creek. They have one active monitoring location on Halawakee Creek along with several historic monitoring locations. This will allow for studies of historic and current conditions to help maximize the potential effectiveness of BMPs, so that BMPs can be placed in strategic locations aimed at improving water quality.

Aerial Photography and Land Cover Mapping



How Do I Help and Get Involved?

City of Auburn - Water Resource Management Department

334-501-3060

www.auburnalabama.org/wrm

Lee County - County Engineer

334-737-7011

www.leeco.us

City of Opelika - Department of Public Works

334-705-5400

www.opelika.org

Auburn University - Risk Management and Safety

334-844-4805

www.auburn.edu/administration/rms/

City of Smiths Station

334-297-8771

www.smithsstation.us